

# FORD RIVER GUIDE MAP

SURVEY DATE: July 22 2012 to July 26 2012

**Author: Jean-Philippe Paiement (June 2019)**

With the contribution from Adam Mitchell-Gendron and Guillaume Lafleur

The guide is made from information gathered during a river trip spanning over 6 days using whitewater kayaks. The team of 3 experienced paddlers made their way from Lake Qamanialuk to the George River in total autonomy.

We estimate the water levels to be average to lower end of the possible flows during the expedition.

The first day was spent travelling from Kuujjuaq to the head waters in the Qamanialuk lake. We made camp along the shore of the lake and explored the rapids of one of the tributaries. Day two consisted of about 28km of paddling to the first major rapid where we camped for the night. On the third day, we made our way to the series of long slides where we portaged and camp along the rocky slabs. Day four was about 30km of quality class III rapids with really fun class IV along the way. Camp was establish on a sandy island at about 55km down river. Finally the last day was spent paddling to the mouth of the river and exploring Helens Falls rapid in the George River.

This map has been developed in collaboration with Nunavik Parks. Since the Ford river is located in parc national Ulittaniujalik, registration is mandatory and specific regulations apply concerning authorized activities and fishing. For more information, visit [www.nunavikparks.ca](http://www.nunavikparks.ca) or contact the Parks office in Kangiqsualujjuaq (819-337-5454) or Kuujjuaq (819-964-2961).

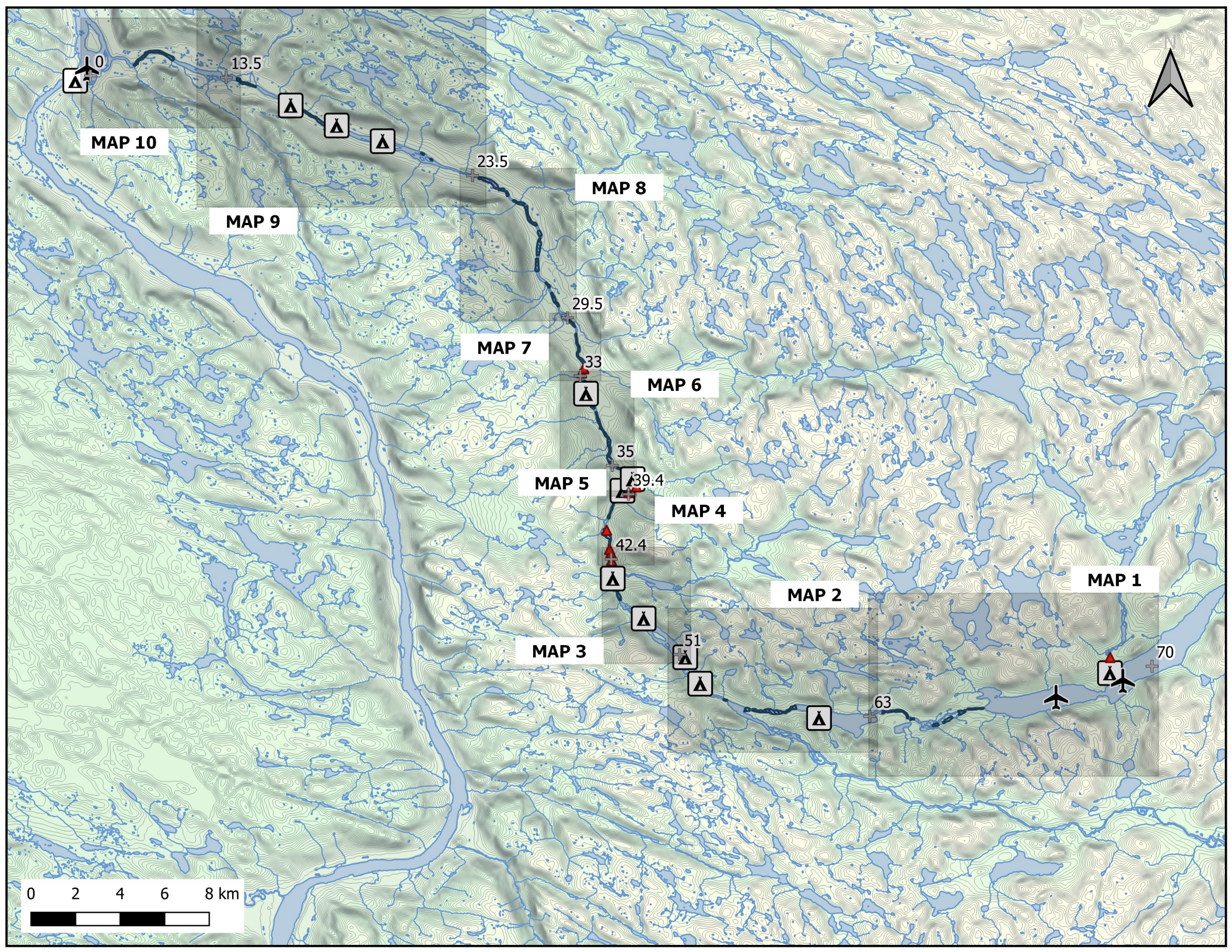
For more details and pictures visit:  
<http://watercolorsimages.blogspot.com/2012/>

Data Sources: Topographic base map and hydrographic network from NRCAN  
White water classification and campgrounds from 2012 expedition

**Map Projection: WGS 84 / UTM zone 12N**





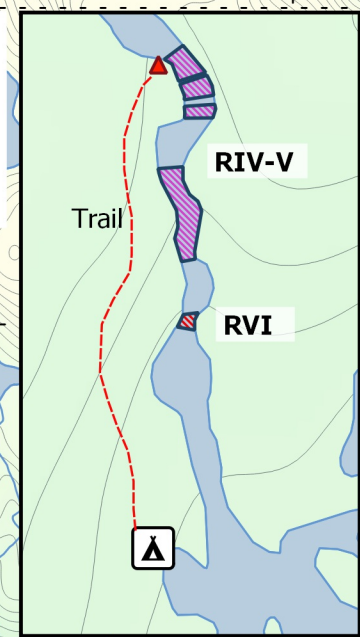




# Map 1

Km 70 to km 55 is located in category II lands of Kangiqsualujuaq. Qiniqtiq Landholding Corporation regulations apply for hunting and fishing (for more information : 819-337-5449).

Upon landing in the lake on Day 1, it is possible to do a small hike up the NW fork of the Ford river for some quality class IV-V rapids.






RII-III

RI

EV







## LEGEND



### Points of Interest

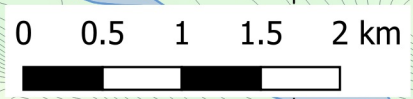
-  Seaplane Landing
-  Campsite
-  Scout

### Rapid Classification

-  EV
-  R I
-  R II
-  R III

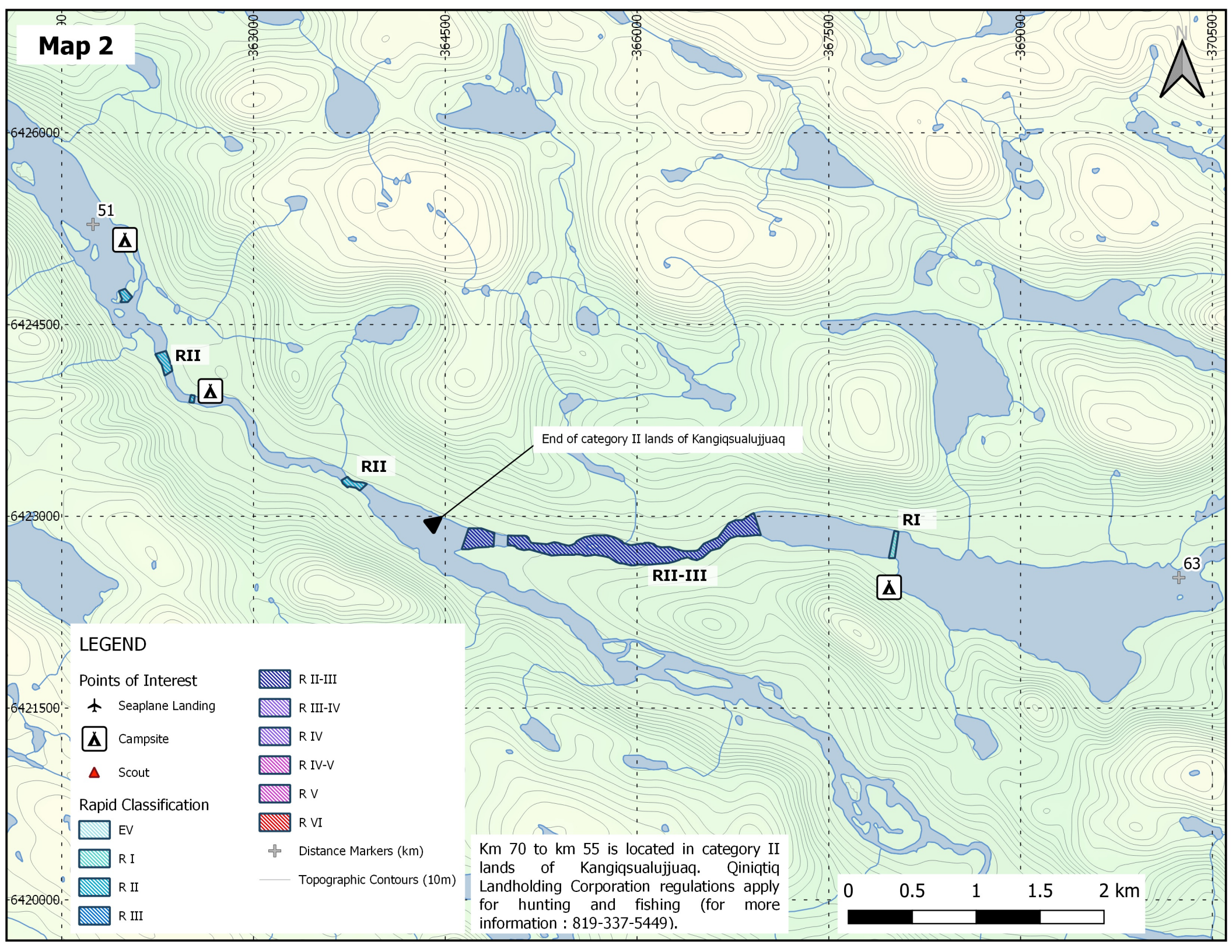
-  R II-III
-  R III-IV
-  R IV
-  R IV-V
-  R V
-  R VI

-  Distance Markers (km)
-  Topographic Contours (10m)





# Map 2





# Map 3





This class V rapid is located on the channel river left of a rocky island. It is possible to scout and camp on the island.

## LEGEND

### Points of Interest

 Seaplane Landing

 Campsite

 Scout

### Rapid Classification

 EV

 R I

 R II

 R III

 R II-III


 R III-IV

 R IV

 R IV-V

 R V

 R VI

 Distance Markers (km)

 Topographic Contours (10m)

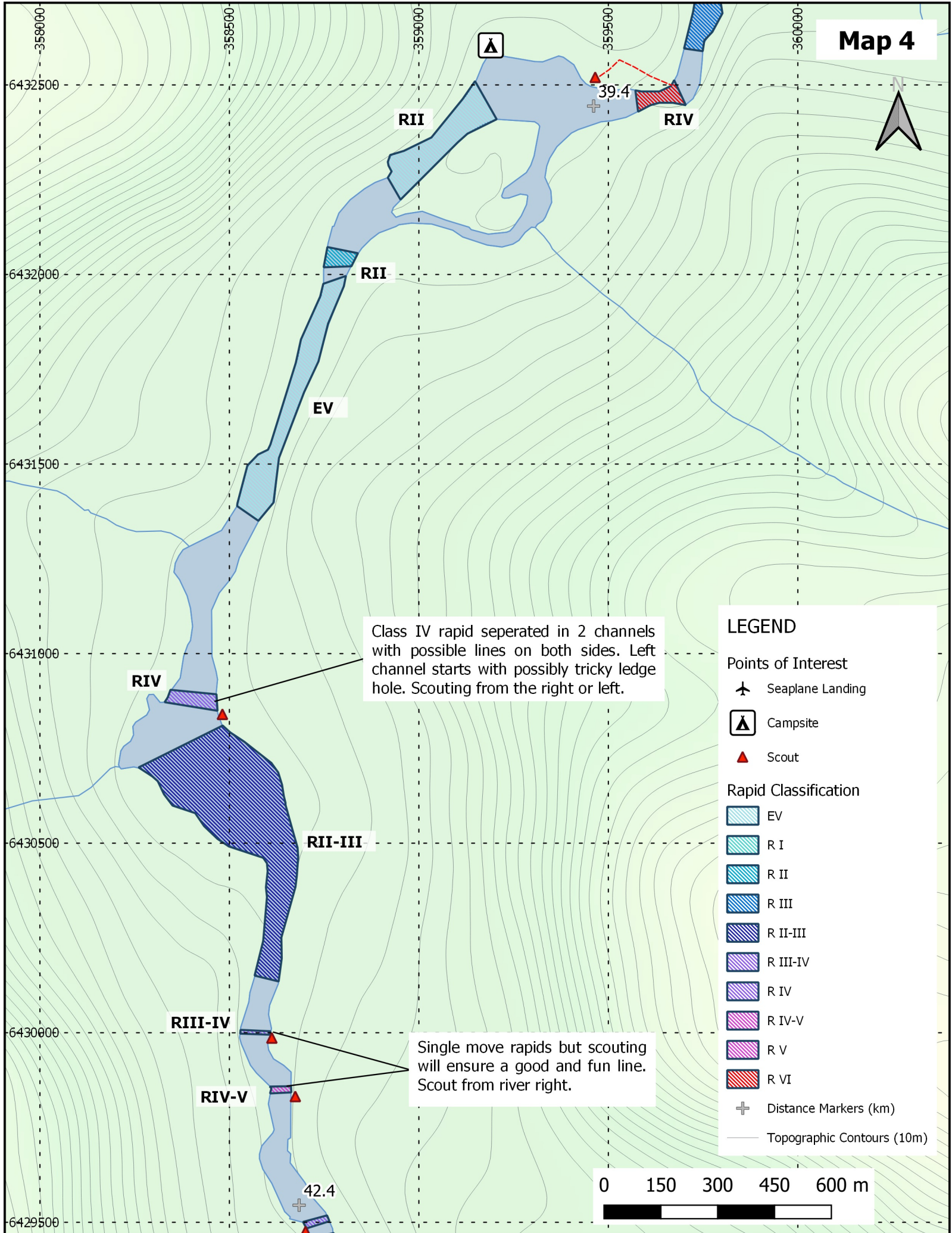
0 0.25 0.5 0.75 1 km



51



# Map 4



Class IV rapid separated in 2 channels with possible lines on both sides. Left channel starts with possibly tricky ledge hole. Scouting from the right or left.

Single move rapids but scouting will ensure a good and fun line. Scout from river right.

## LEGEND

### Points of Interest

- Seaplane Landing
- Campsite
- Scout

### Rapid Classification

- EV
- R I
- R II
- R III
- R II-III
- R III-IV
- R IV
- R IV-V
- R V
- R VI

- Distance Markers (km)
- Topographic Contours (10m)

0 150 300 450 600 m





## LEGEND

### Points of Interest

✈ Seaplane Landing

⚓ Campsite

▲ Scout

### Rapid Classification

-  EV
-  R I
-  R II
-  R III
-  R II-III
-  R III-IV
-  R IV
-  R IV-V
-  R V
-  R VI

✚ Distance Markers (km)

— Topographic Contours (10m)

0 50 100 150 200 m

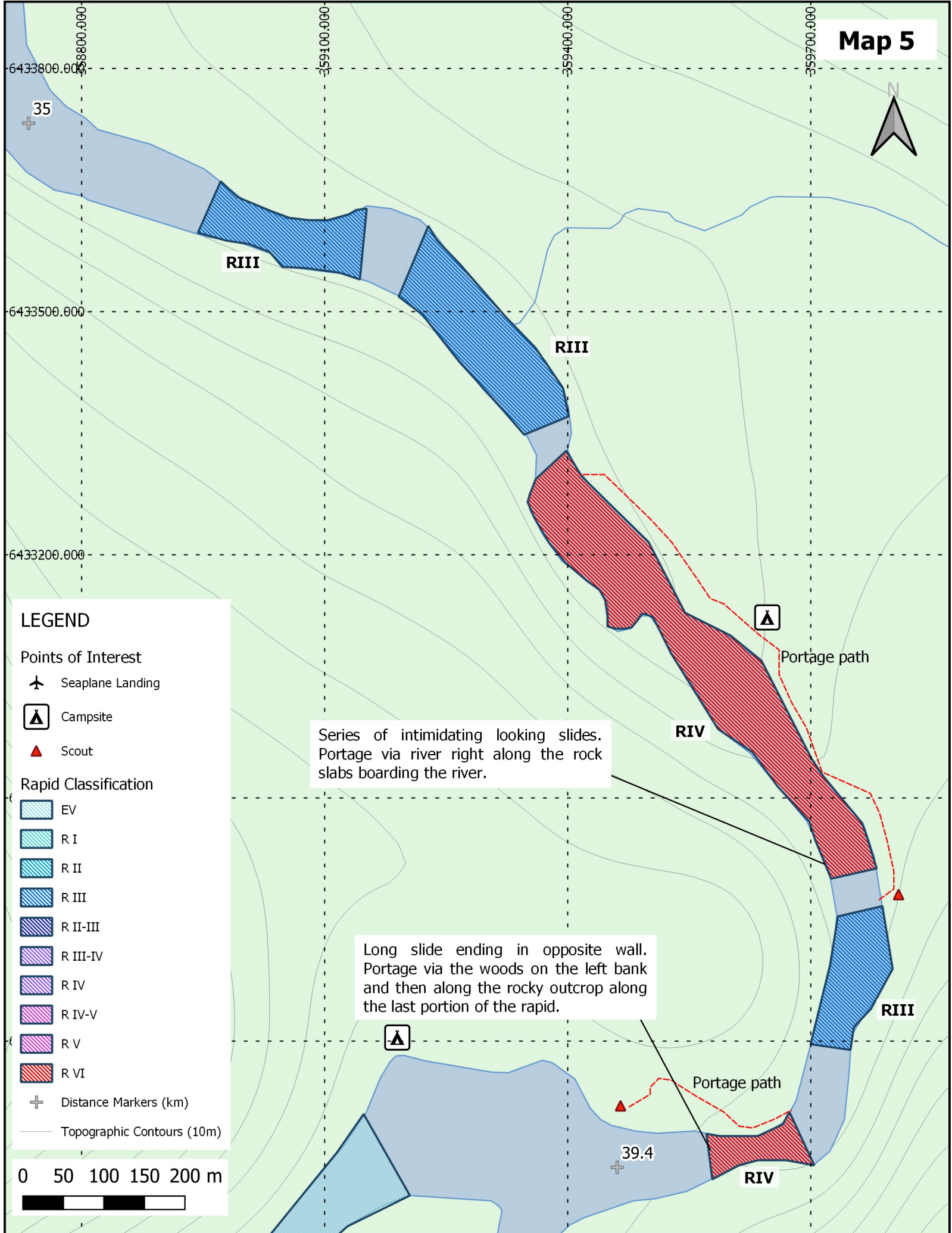


Series of intimidating looking slides.  
Portage via river right along the rock  
slabs boarding the river.

Long slide ending in opposite wall.  
Portage via the woods on the left bank  
and then along the rocky outcrop along  
the last portion of the rapid.

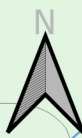
Portage path

Portage path





Map 6



LEGEND

Points of Interest

- Seaplane Landing
- Campsite
- Scout

Rapid Classification

- EV
- R I
- R II
- R III
- R II-III
- R III-IV
- R IV
- R IV-V
- R V
- R VI

Distance Markers (km)

Topographic Contours (10m)

0 200 400 600 800 m





# Map 7



## LEGEND

### Points of Interest

- Seaplane Landing
- Campsite
- Scout

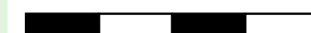
### Rapid Classification

- EV
- R I
- R II
- R III
- R II-III
- R III-IV
- R IV
- R IV-V
- R V
- R VI

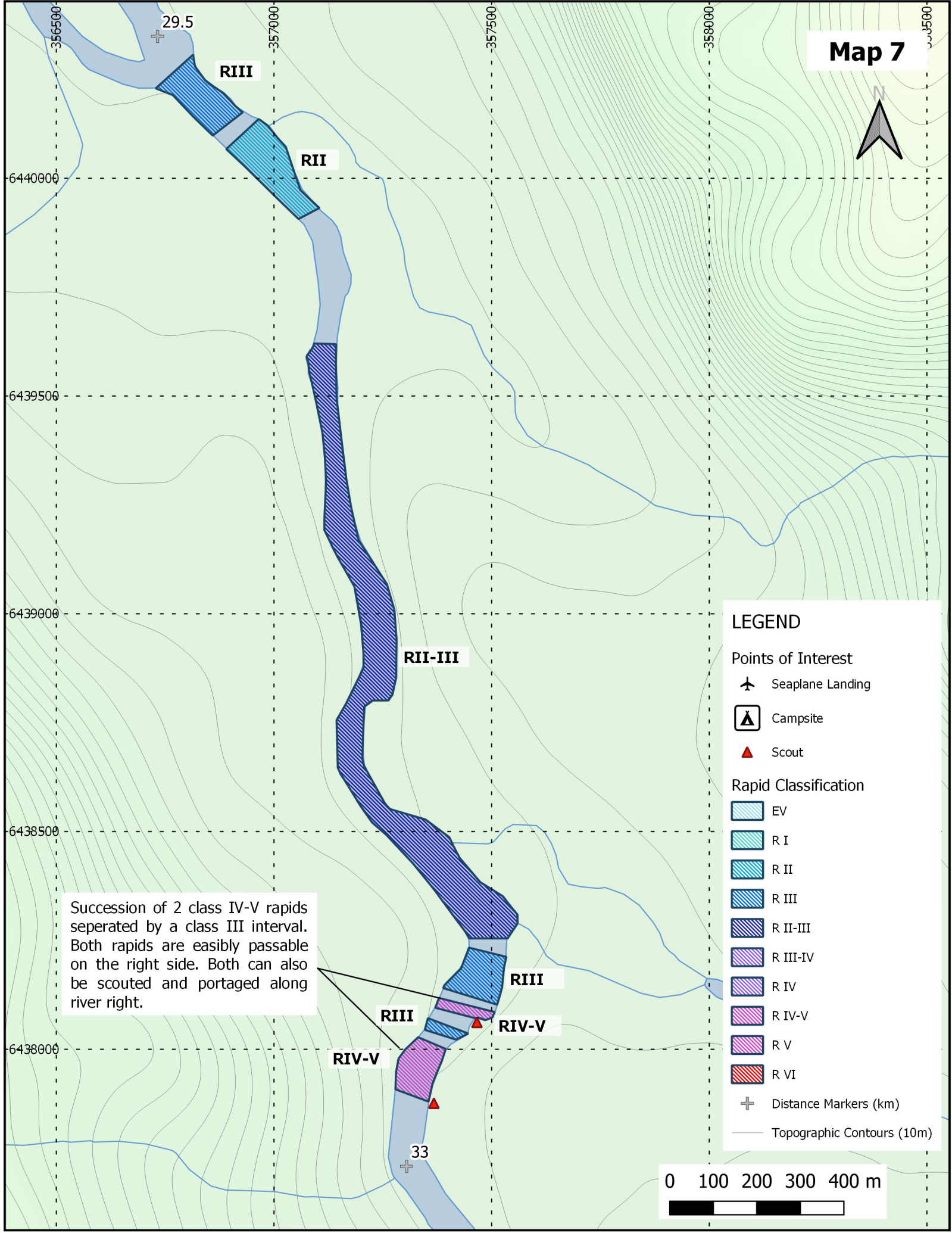
Distance Markers (km)

Topographic Contours (10m)

0 100 200 300 400 m

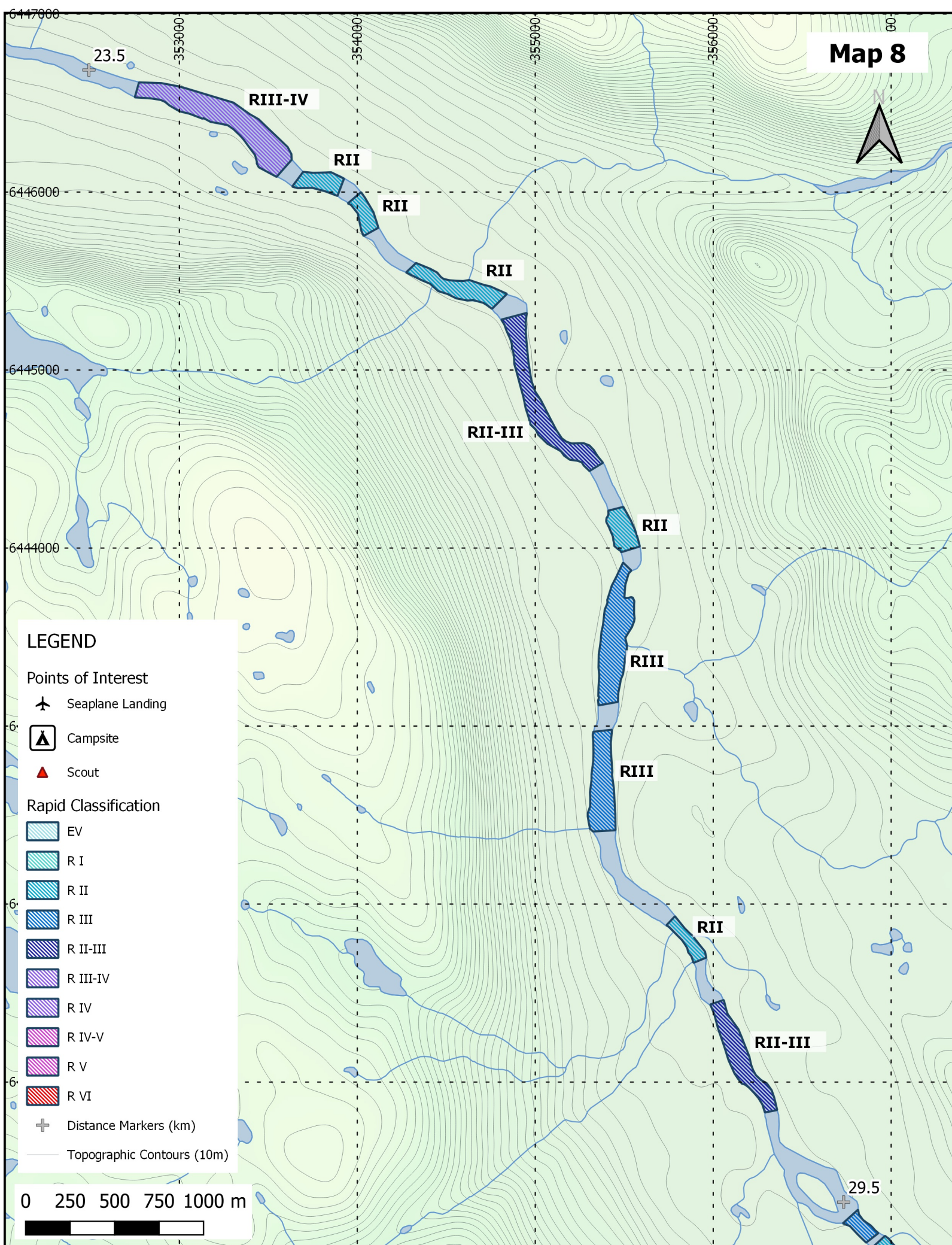


Succession of 2 class IV-V rapids separated by a class III interval. Both rapids are easily passable on the right side. Both can also be scouted and portaged along river right.





Map 8





**LEGEND**

**Points of Interest**

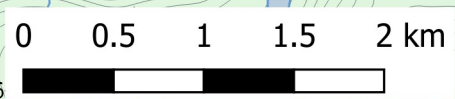
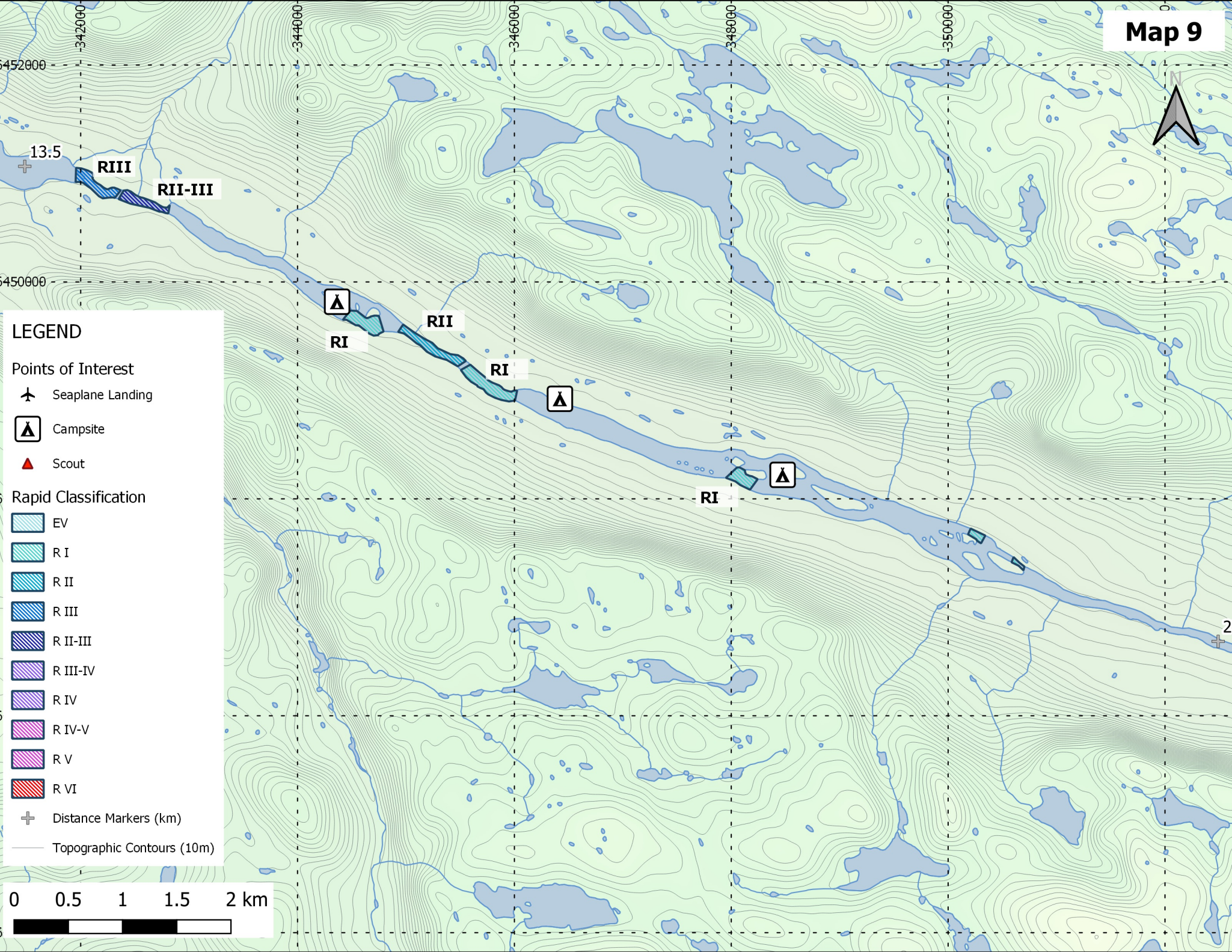
- ✈ Seaplane Landing
- ⬆ Campsite
- ▲ Scout

**Rapid Classification**

- EV
- R I
- R II
- R III
- R II-III
- R III-IV
- R IV
- R IV-V
- R V
- R VI

✚ Distance Markers (km)

— Topographic Contours (10m)







The descent ends in the George River. From there, it is possible to organize a seaplane or motor boat pick up. It would also be possible to paddle 70km to the village of

**George River**

**Ford River**




**R II-III**

**Helen Falls**

Helens falls Rapid is located at the confluence of the George River and Ford River. It offers multiple big water lines for an extra day of paddling at the end of the expedition.







**LEGEND**

**Points of Interest**

-  Seaplane Landing
-  Campsite
-  Scout

**Rapid Classification**

-  EV
-  R I
-  R II
-  R III

-  R II-III
-  R III-IV
-  R IV
-  R IV-V
-  R V
-  R VI

-  Distance Markers (km)
-  Topographic Contours (10m)

