

INTRODUCTION

The Powell Forest Canoe Route, also known as Powell River Canoe Route, is located about 150 km northwest of Vancouver, British Columbia, Canada. It connects the backwaters of the Powell River, maintained by a Dam at the city of Powell River, with a series of lakes. The route is shaped like a horseshoe, so a relatively short shuttle is required in order to complete the loop.

NOTE: the details of the campsites and portages are limited to our own route of July-August 2013. If you happen to travel other areas of this overall route, please submit any relevant observation or detail (contact information available on www.cartespleinair.org) so we can add your contribution to this map.

FACT SHEET

Length

variable

Difficulty

Powell Lake and Lois Lake can challenge the experienced paddler in strong winds. In general, expect winds blowing northerly starting late morning.

Portage

Portages are long and some are very steep. Trails are very well maintained, with numerous resting spots.

CAMPING

Conditions of the survey presented in this map were in particularly dry conditions with water levels fairly low. Some beach camping shown may not be available in high water conditions.

On the map, the campsites are indicated by a triangle symbol, with optional rating. The ratings are as follow:

- Size: in number of mid-size (approximately 4 person): 1, 2, 3, 4, 5, or G standing for "group".
- Quality: A=excellent, B=good, C=fair, D=poor, E=backup.

ACCESS

From Vancouver, head to the Sunshine Coast via the Horseshoe bay - Langdale Ferry. Drive north to Earl Cove and take the ferry to Saltery Bay. Exit the ferry terminal at Saltery Bay and head towards Powell River on BC-101-N. After approximately 12.5 km, turn right on Dixon road (approximately 1 km after passing over the penstock of the Lake Lois Power Station). follow Dixon Road all the way to the boat ramp down to Lois lake some 3.5 km from BC-101. Other roads lead to this location but this one is in the best condition. Many boaters park their car along the Goat Lake Main road up the hill from the ramp. Close your windows as the dust from passing vehicles on the dirt road can pile up pretty thick inside your car!

<http://maps.google.ca/maps?q=Powell%20River,%20BC>

RESOURCES

Several websites describe the route, below are a few :

<https://www.canoeingbc.com/powell-forest-canoe-route-details>

<https://www.friendspowellforestcanoeroute.ca/>

CREDITS

Authors

Janie Bergeron, Francois Vitez, July-August 2013

Base Topographic Maps

Copyright Her Majesty the Queen in Right of Canada, Department of Natural Resources. All rights reserved.

Map work

Charles Leduc, 2013

Contributors

Philippe St-Pierre, corrections, 2022

Distribution

Authorized, provided the content remains unchanged and the distribution is done free of charge.

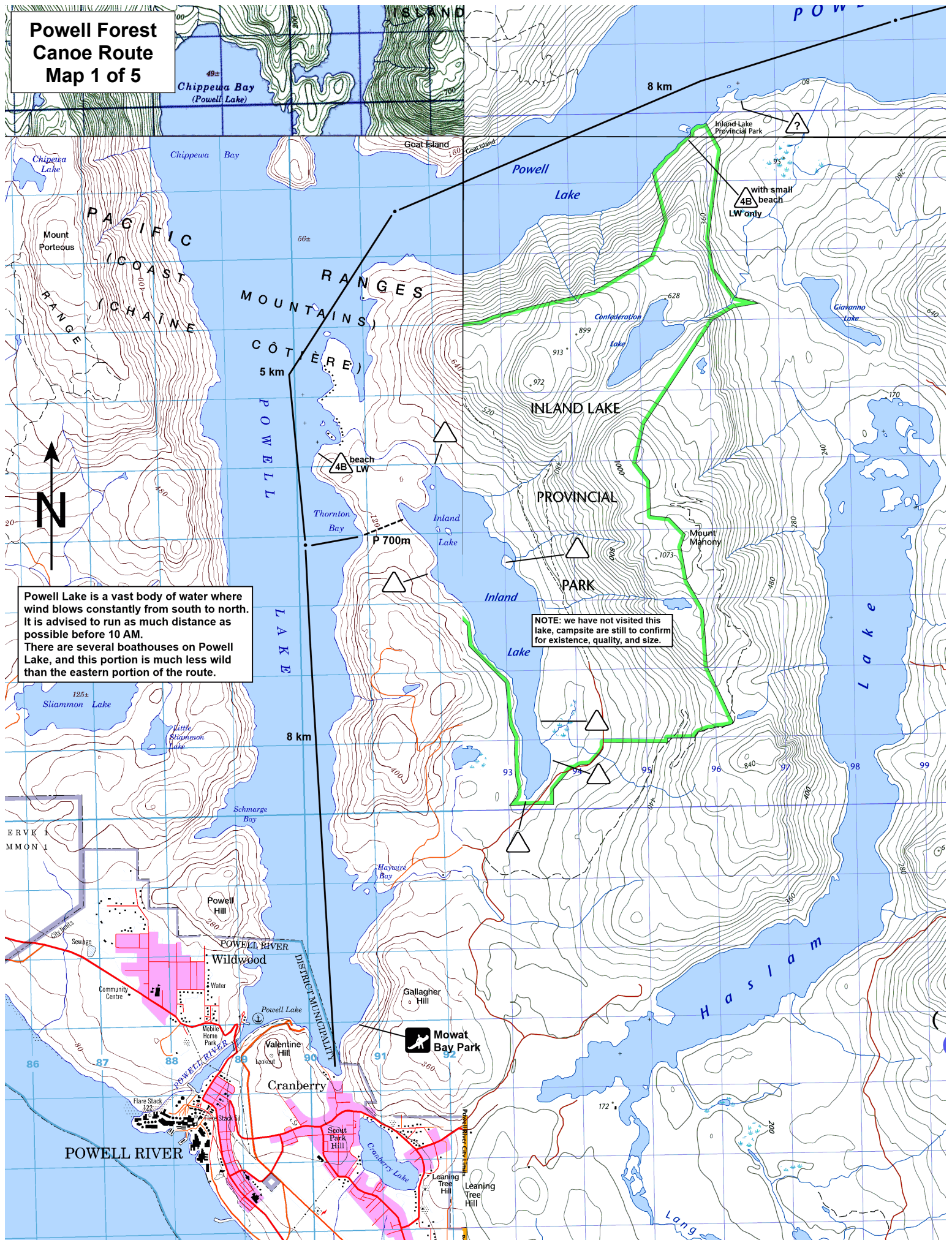
Available from www.cartespleinair.org.

DISCLAIMER

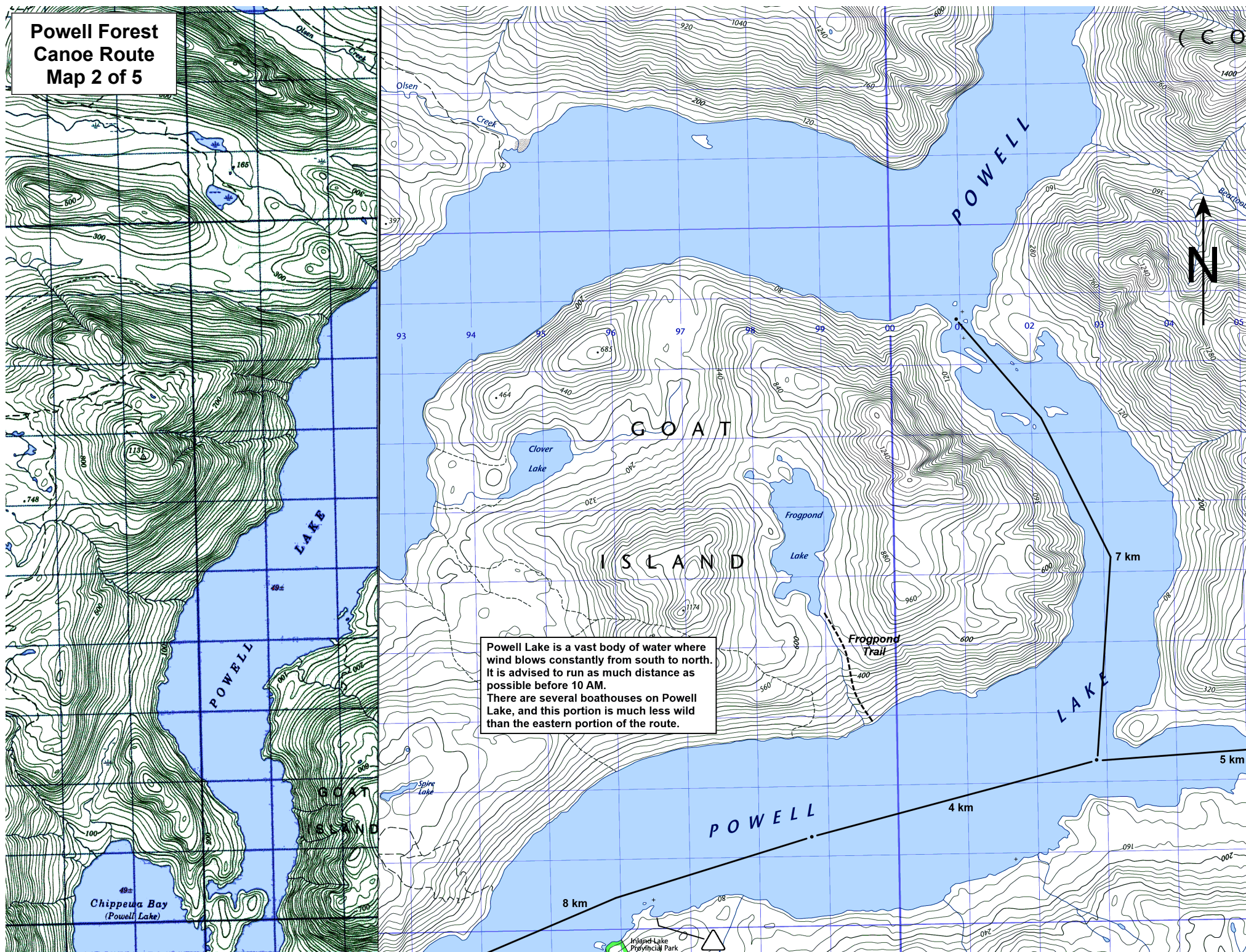
This document has been produced on a volunteer basis by paddlers who do not claim to have infallible judgment. The authors assume no responsibility for any accident, damage or other prejudice that may result from the use of this document. Omissions or errors are always possible, and we would be grateful should you bring them to our attention.

[illegible]

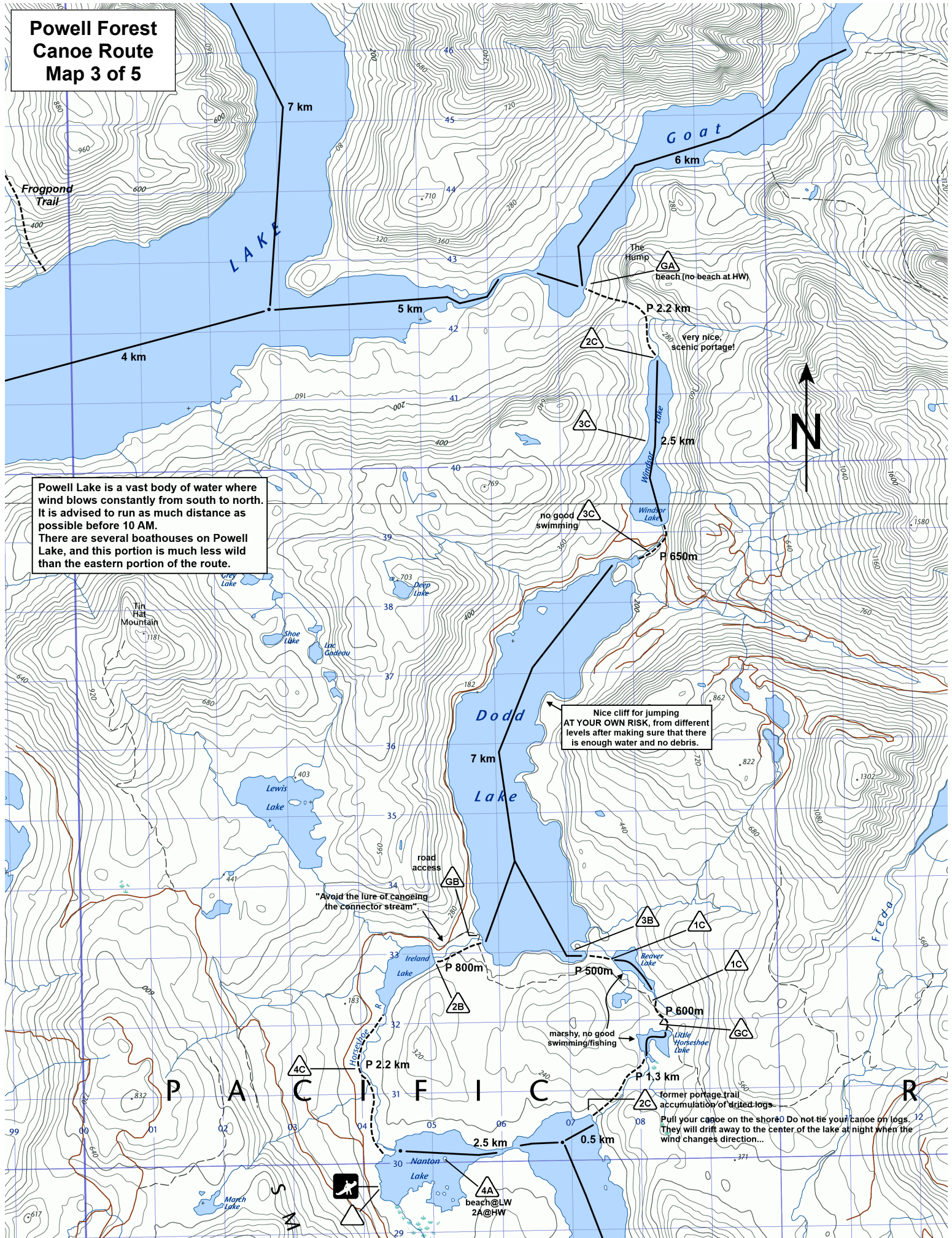
Powell Forest Canoe Route Map 1 of 5



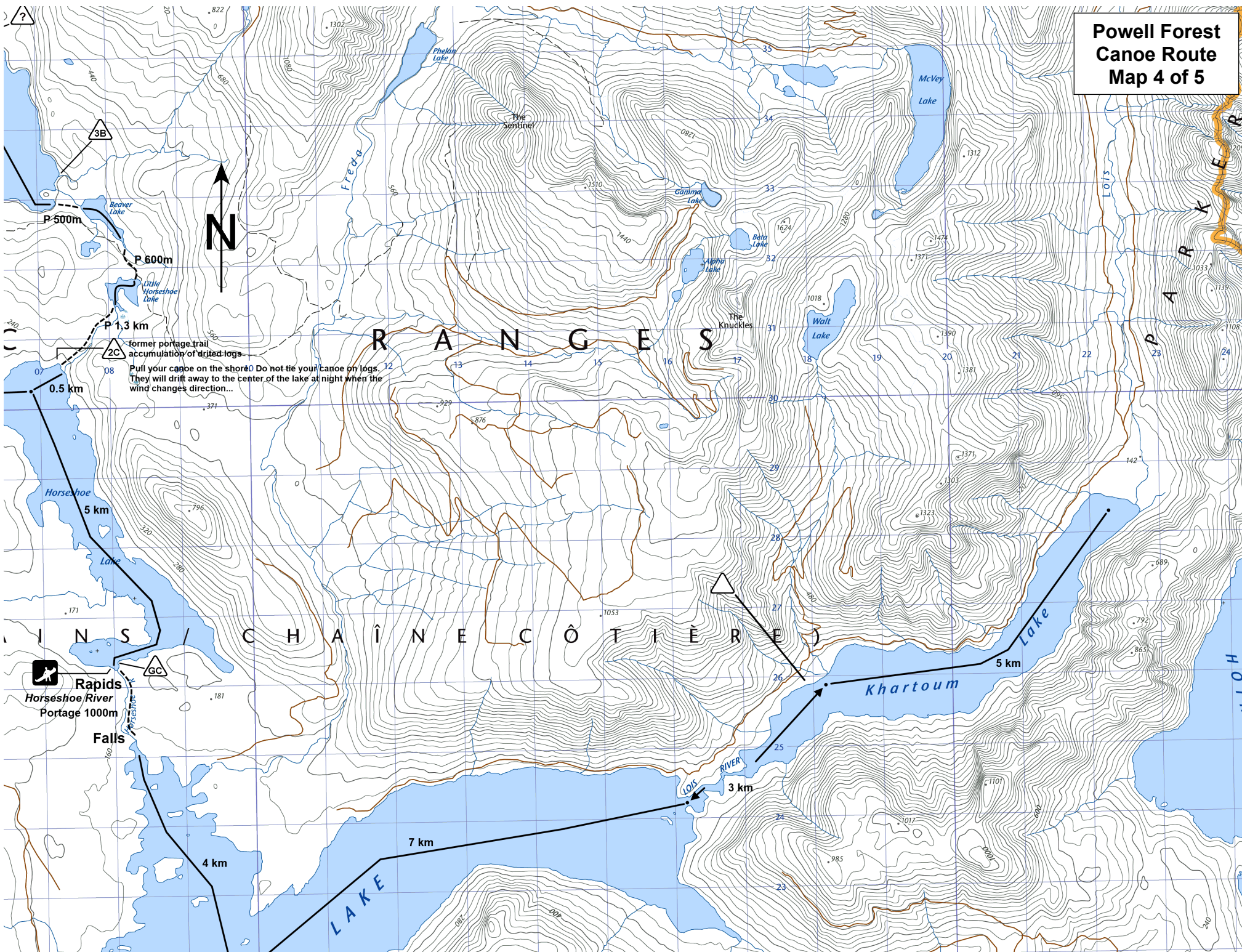
**Powell Forest
Canoe Route
Map 2 of 5**



Powell Forest Canoe Route Map 3 of 5



**Powell Forest
Canoe Route
Map 4 of 5**



**Powell Forest
Canoe Route
Map 5 of 5**

