

Raisin River

Introduction

The Raisin river is located on the way from Montreal to Cornwall. It is actually closer to Cornwall than Montreal. It takes its source in the flat lands north and northeast of Cornwall, then parallels the St Lawrence river for a while, and finally feeds it at the city of Lancaster. Highway 401 crosses the Raisin at about 1 km from its mouth. You also can visit the Cooper Marsh Conservation Area nearby.

Each Spring around mid-April, there is a canoe race that is actually a social event at the same time. It gathers different kinds of paddlers, from the small family who takes its old-style canoe for a funny outing, to the serious racers with tubes in both ends of the digestive system, willing to optimize each and every one of their paddle strokes.

Description from the website of the Raisin River Conservation Authority:

www.rrca.on.ca/news_events/events_home/2005canoerace.htm

The canoe race begins in St. Andrew's West and ends in Williamstown, the longest race in Eastern Ontario. The course is 35 kilometers long, winding and varied. Obstacles include the dam in Martintown (shoot or portage) and rapids at various points along the course. It is a good opportunity for family and friends to get together and enjoy a beautiful day.

Topographic Maps

1 : 50000 31G/02 Cornwall

1 : 50000 31G/01 Huntingdon (optional, last 2 km)

Water levels and water quality

In the Spring, when the water is high, the pollution coming from nearby farms is more diluted, thus the water should have higher quality. In early summer, water levels are sufficient for pleasant navigation except for a couple rocky stretches, and the river offers enjoyable scenery but the water was definitely not inviting for swimming.

The last 3 kilometers of the river have been tried during the Fall, paddling upstream then downstream from the dock at South Lancaster, and the water was cleaner than upstream, probably because the waters of the Saint Lawrence mix with those coming from the lands. That option, coupled with a visit of the nearby Cooper Marsh can make a beautiful day with kids.

Difficulty

Mostly quiet water, except for a couple of short stretches with rapids. Most difficult rapid encountered (IN THE SMALL STRETCHES COVERED IN THIS DOCUMENT ONLY) would probably range around CII-III at higher water levels.

Access

From Montreal:

- Take highway 20, westbound. If coming from highway 40, the best option is to keep on the 40, until you reach the Y split, where you will take the left, towards Cornwall and Toronto, whereas the 40 itself keeps going towards Ottawa.
- When crossing the Ontario border, highway 20 becomes highway 401.
- Lancaster is at exit 814 of highway 401.

To get to the Raisin upstream of the 401, refer to an Ontario road map.

To get to the South Lancaster dock either for an upstream paddle, or to use it as a take-out only:

- take road 34, southbound, for 1 km
- at the curve of road 34, go straight ahead (road turns right), then bear left (east) in local streets to get to the dock.
- Signs will guide you to the dock, which is located at the end of King Street. There you are on the St Lawrence, less than half a kilometer east of the mouth of the Raisin.

Montréal (junction 40 and 15N) - Lancaster: 80 km, 0h50

Credits and Distribution

Survey

Charles Leduc, October 2004 and June 2005

Map work/Text

Charles Leduc, July 2005.

Contributors

Rock Martel, Lise Tremblay - preliminary information on the river
Marie-Geneviève Lebrun, Johanne Roberge - revision

Base Maps

Copyright © Her Majesty the Queen in Right of Canada, Department of Natural Resources. All rights reserved.

Distribution

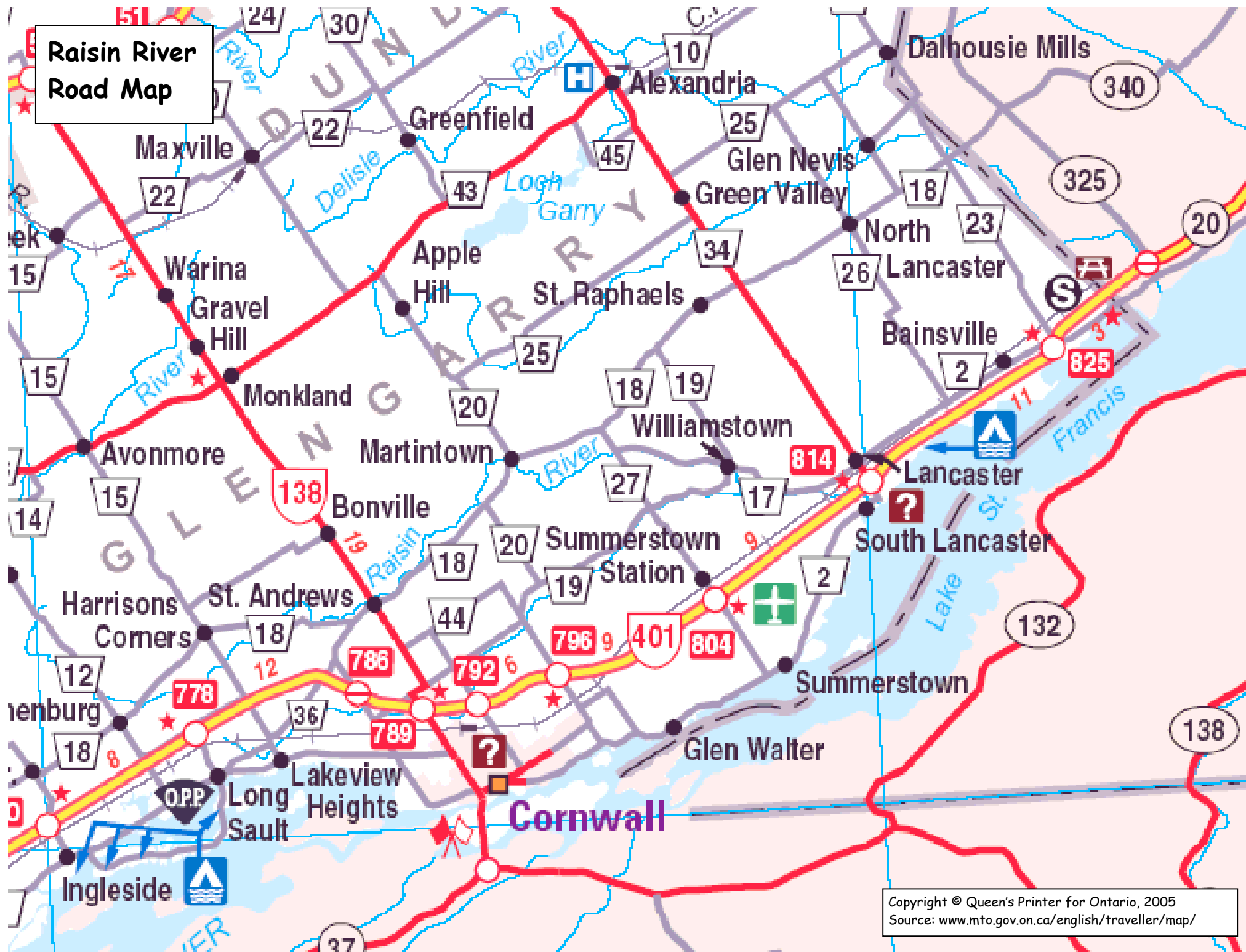
Authorized, provided the content remains unchanged and the distribution free of charge.

Available from www.cartespleinair.org.

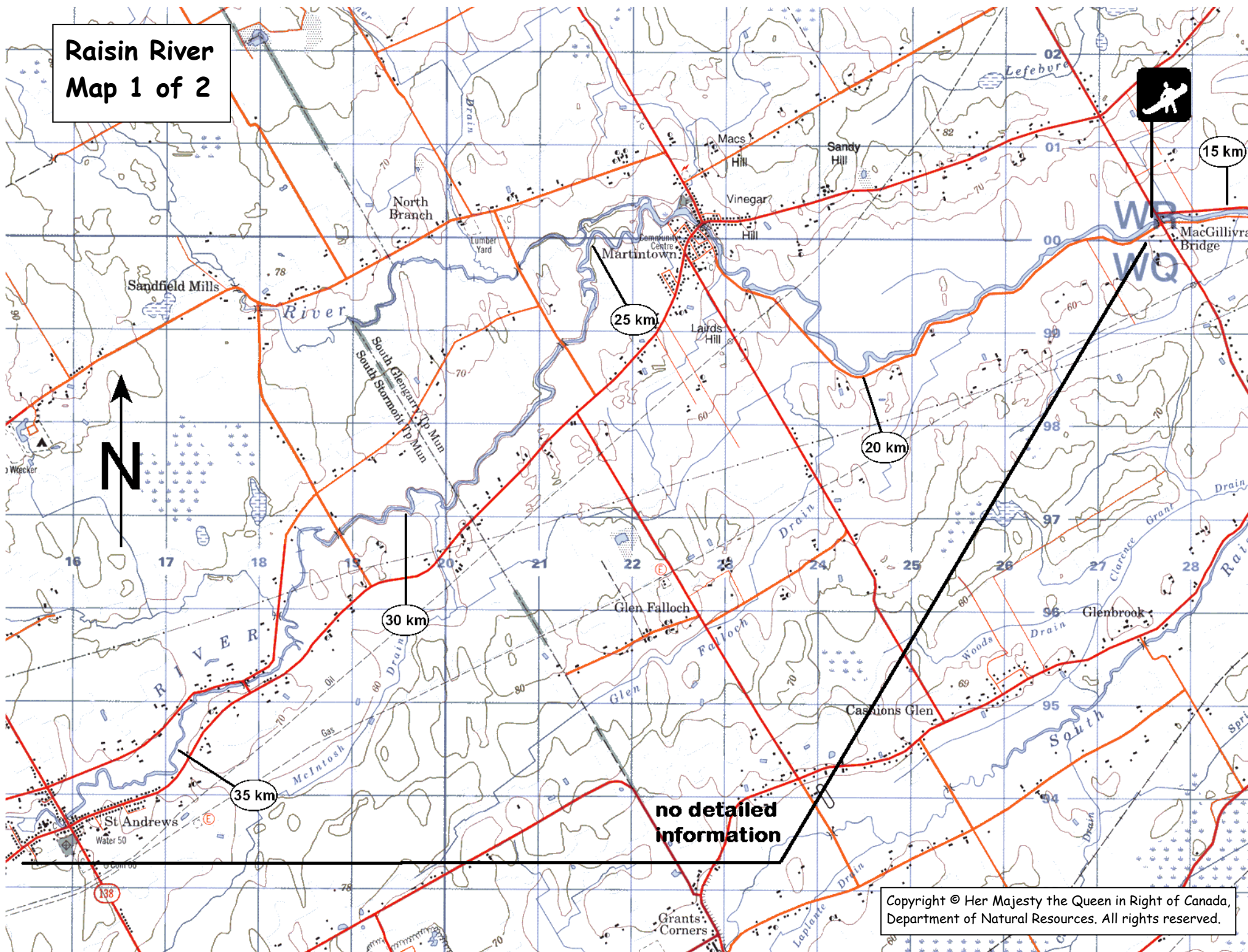
Disclaimer

This document has been produced on a volunteer basis by paddlers who do not claim to have infallible judgment. The authors assume no responsibility for any accident, damage or other prejudice that may result from the use of this document. Omissions or errors are always possible, and we would be grateful should you bring them to our attention.

**Raisin River
Road Map**



Raisin River Map 1 of 2



no detailed
information

Raisin River Map 2 of 2

