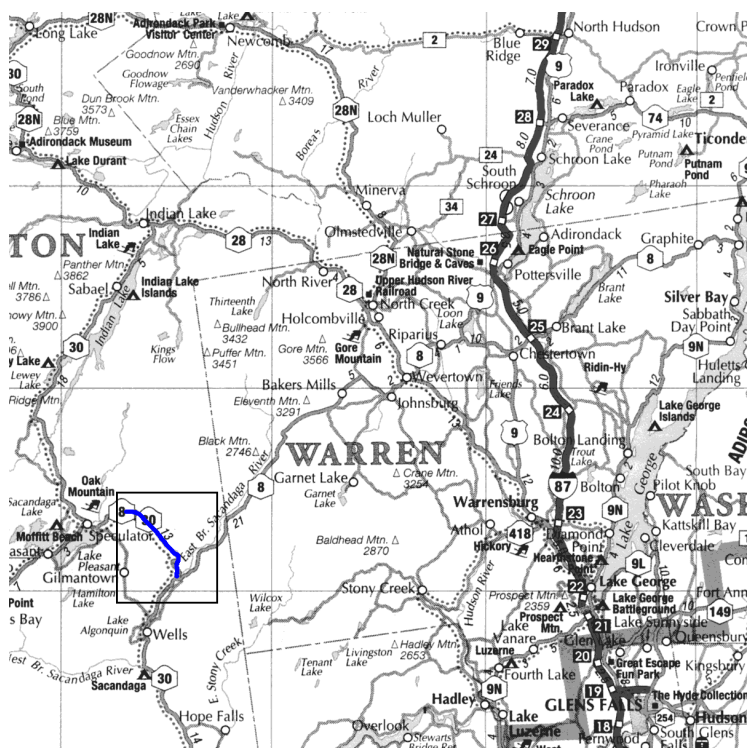


# Sacandaga River - Christine Falls to East Branch

## Introduction

This section is located near Speculator, Southern Adirondacks, and offers several good stretches of class 3 and 4 rapids.



Length: 8-10 km

Difficulty: CIII - IV(VI)

## Portages:

- Christine Falls 350m (may be able to put-in right after)
- Austin Falls 300m (unless you run it - class 5)
- Auger Falls 1.2 km. Take-out recommended upstream in order to avoid it. Nice walk however.

## Access

Put-in:

<http://maps.google.com/maps?q=43.511304,-74.313455>

Recommended take-out (above Auger Falls):

<http://maps.google.com/maps?q=43.471017,-74.251785>

Shuttle: 8km, Oh10

<http://maps.google.com/maps?saddr=43.471017,-74.251785&daddr=43.511304,-74.313455>

## Water levels

Reference is the USGS station on the Sacandaga near Hope (01321000): <http://waterdata.usgs.gov/ny/nwis/uv?01321000>  
At a level of 3.25 during our descent, this was between the minimum, and too low, depending on sections. A level of 4.0 is recommended as the minimum.

## Credits

Olivier Tardif, Charles Leduc

Decent May 26, 2001, 3.25 pi at station 01321000

## Base Map

USGS - NY - Wells

USGS - NY - Griffin

Available from: <http://www.nysgis.state.ny.us/gisdata/quads/>  
(quadrangles M44 and M45)

## Map work / Text

Charles Leduc, 2009

## Distribution

Authorized, provided the content remains unchanged and the distribution is done free of charge.

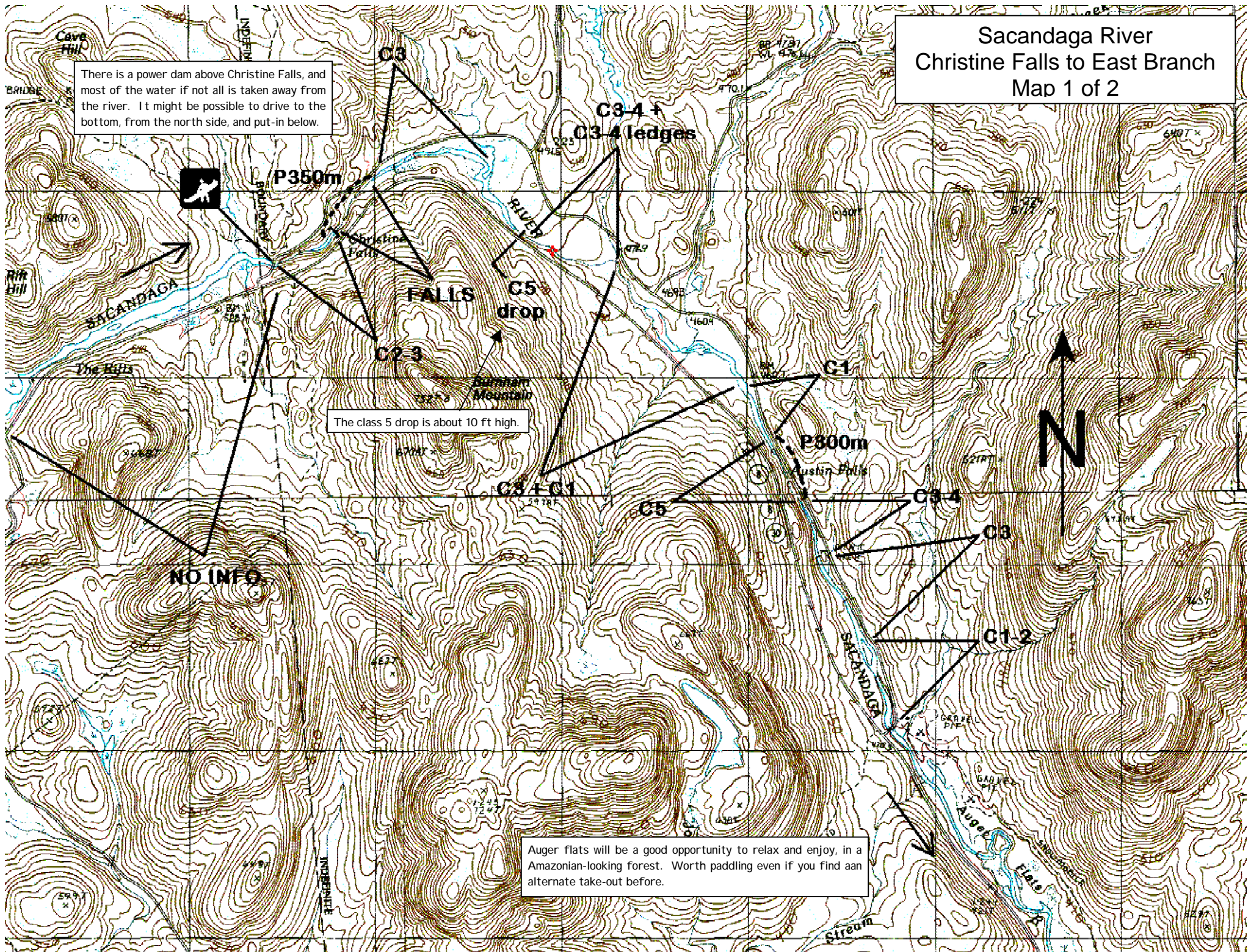
Available from [www.cartespleinair.org](http://www.cartespleinair.org).

## Disclaimer

This document has been produced on a volunteer basis by paddlers who do not claim to have infallible judgment. The authors assume no responsibility for any accident, damage or other prejudice that may result from the use of this document. Omissions or errors are always possible, and we would be grateful should you bring them to our attention.

# Sacandaga River Christine Falls to East Branch Map 1 of 2

There is a power dam above Christine Falls, and most of the water if not all is taken away from the river. It might be possible to drive to the bottom, from the north side, and put-in below.



The class 5 drop is about 10 ft high.

Auger flats will be a good opportunity to relax and enjoy, in a Amazonian-looking forest. Worth paddling even if you find an alternate take-out before.

Sacandaga River  
Christine Falls to East Branch  
Map 2 of 2

Take-out is recommended above Auger Falls. No parking or camping overnight. It is worth taking the time to walk along the river, and admire the falls.



P1.2km

**AUGER FALLS  
DANGER**

Forks Mountain

C3



According to guidebooks and to <http://www.americanwhitewater.org>, the section below the East Branch is class 2 or 2-3, whereas the lower section of the East Branch is of class 3+ (5), 11 km.

**NO INFO**