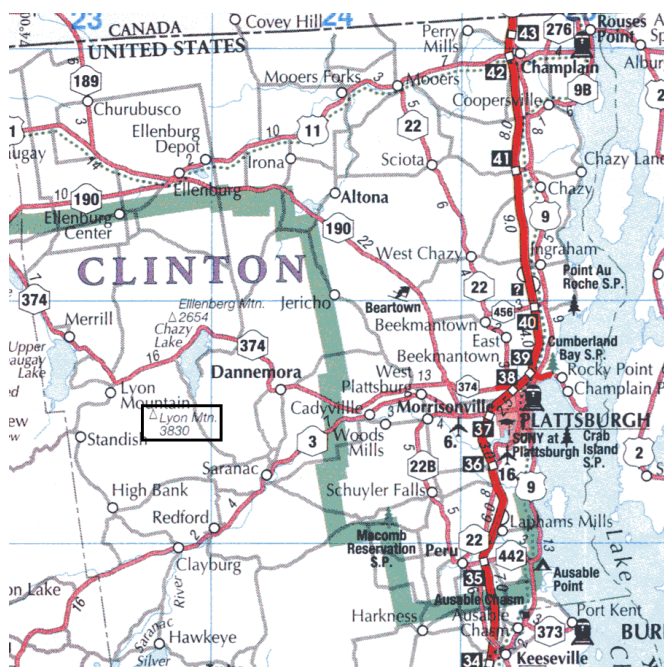


Lyon Mountain, New York State

Introduction

Lyon Mountain is an isolated peak located in the northern Adirondacks. It makes a good challenge for young kids, a moderate hike for most adults, or a short and quick hike for avid hikers. At 133 km, 2 hours drive from Montreal, or 42 km, 0h52 from Plattsburg, it makes a good opportunity for a day hike. Peakbaggers will also want to pursue their hike to Averill Peak, located 1.8 km to the southwest. At 3830 ft, Lyon Mountain is the 59th highest peak of the Adirondacks, whereas Averill is 62nd, at 3810 ft. The top has good views of the area, and a fire tower.



Source : I Love New York - Tourism Map

Driving Directions

Driving directions can be obtained from Google Maps using this link: <http://maps.google.com/maps?daddr=44.7236,-73.8417>

Description

Trails to Lyon Mountain:

There are two distinct trails to the summit:

- the old trail, that is direct, but less scenic, and wet and muddy as soon as it rains, or rained, and during the snowmelt period.
- the new trail, with better drainage, and more switchbacks through a nice forest. It is the official trail, that replaces the old one.

The new trail diverges left from the old trail after about 300m from the trailhead (as of November 2008, there was a clear sign at the junction), and the two trails merge back together at about 800m from the summit.

If conditions are not muddy, one can make a loop by climbing up the old trail, and be back using the new trail.

Bushwhack to Averill Peak:

From the fire tower on the summit of Lyon Mountain:

- From the fire tower, go to the right (southwest), while staying on large, flat rocks. Somewhere at the limit of these rocks, there is some muddy, boggy area.
- Cross the muddy area, and follow a trail entering the wood. In November of 2008, there were planks of wood put across to help.
- After a couple minutes of walk, the trail emerges to a dirt gravel road. Follow that road to the left (uphill) for a short distance, up to a clearing.
- From the clearing, a short trail takes you soon to an open view from ledges.
- To get down the ledges, and enter the forest on the way to Averill, find a trail to the left, well before the steep cliffs ahead, that goes down from the bump where you are.
- Descend towards the col. There is no maintained trail, but you will find blazes periodically, and the going is relatively easy. At some point, the terrain becomes less steep, with many spruces from about 4 to 8 ft high, and some down trees. From this point, we could not figure out where the trail continued, and we turned back for several reasons. Please complete this description if you ever get further.

Credits and Distribution

Map Work/Text

Charles Leduc, February 2009

Revision/Corrections

Jean-Francois Bertrand, Sébastien Lapierre, Nicolas Turgeon

USGS Topographic Maps

Available from:

<http://www.nysgis.state.ny.us/gisdata/quads/drq24/index.htm>

1:25000 Lyon Mountain NYSDOT C47 USGS o44073f7

1:25000 Moffitsville NYSDOT C48 USGS o44073f8

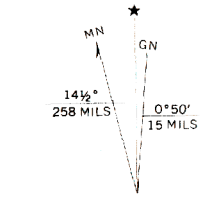
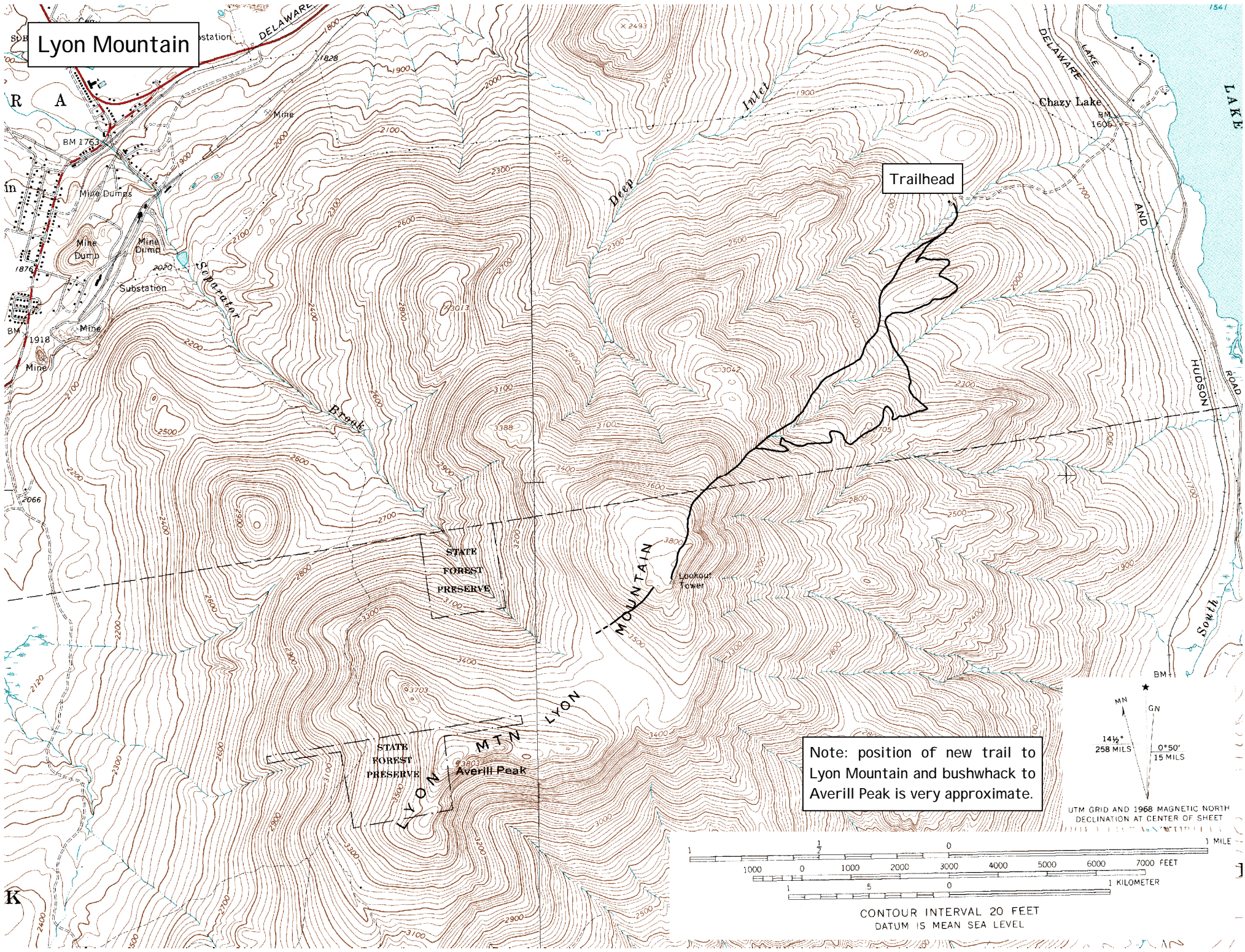
Distribution

Authorized, provided the content remains unchanged and the distribution is done free of charge. Available from www.cartespleinair.org.

Disclaimer

This document has been produced on a volunteer basis by hikers who do not claim to have infallible judgment. The authors assume no responsibility for any accident, damage or other prejudice that may result from the use of this document. Omissions or errors are always possible, and we would be grateful should you bring them to our attention.

Lyon Mountain



CONTOUR INTERVAL 20 FEET
DATUM IS MEAN SEA LEVEL